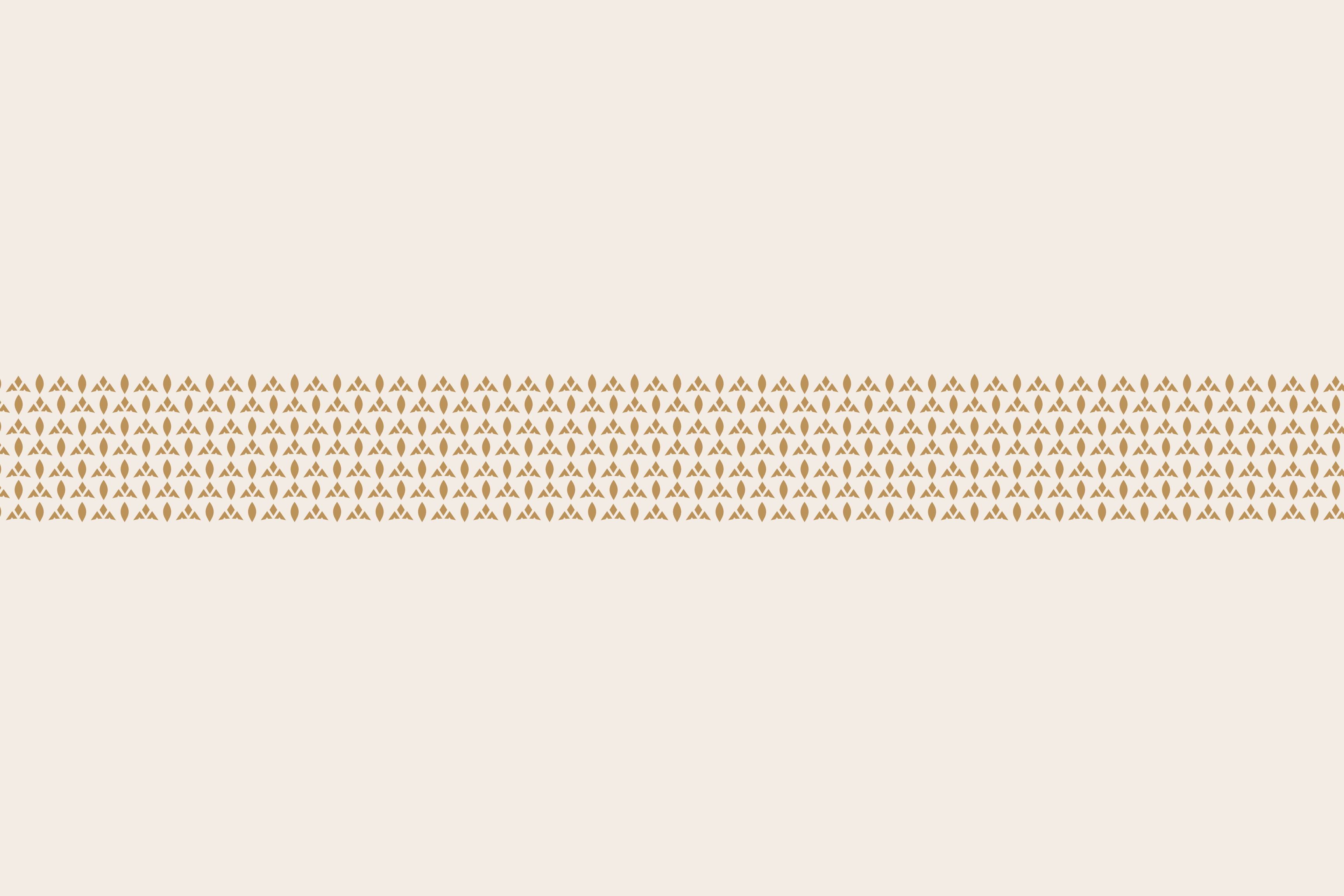


WHERE  
MODERN GREECE  
MEETS  
**LUXURY  
LIVING!**



HRERA Registration No. 51 of 2024 dated 13.05.2024





**CREDIBLE in  
CALIBRE.**  
**COMMITTED  
at CORE.**

**10  
YEARS**  
Of Existence

**25+  
PROJECTS**  
Executed

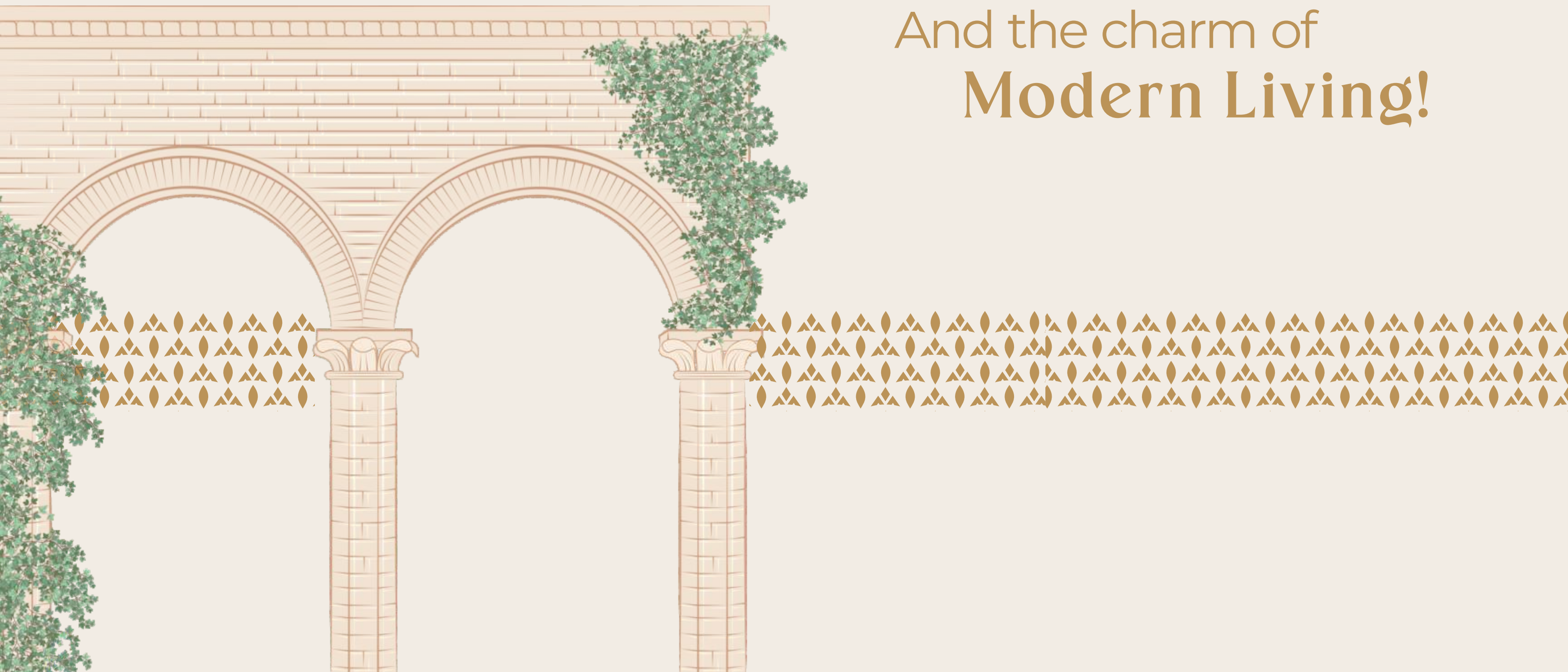
**17 Million+**  
Projects Total <sup>Sq.ft.</sup>  
Built-up Area

**7.5 Million** <sup>Sq.ft.</sup>  
Currently  
Under Development

**5,000+**  
Happy  
Adore Families



Imprints of  
**Old Greek Royalty,**  
And the charm of  
**Modern Living!**



Presenting



THE  
SELECT  
PREMIA

at  
SECTOR 77, GURUGRAM





“

Escape the ordinary and  
embrace the extraordinary  
at **SELECT PREMIA**,  
where luxury is a way of life.

”



# Grand Aerial View





# LOCATION MAP

## HOSPITALS

- Medanta - The Medicity
- Fortis Memorial Research Institute
- Artemis Hospital
- Max Hospital
- Paras Hospital

## CONNECTIVITY

- Golf Course Extension Road
- IGI Airport
- NH 48
- Dwarka Expressway

## SCHOOLS

- Pathways World School
- GD Goenka Public School
- DPS International School
- St. Xavier's High School
- Ryan International School
- Amity International School

## HOTELS

- The Leela Ambience
- Hyatt Regency
- ITC Grand Bharat
- The Westin
- Radisson Blu
- Le Meridien
- The Oberoi







## LEGEND

- ENTRANCE AVENUE
- COURT
- FOUNDATION
- SHOPPING PLAZA
- AMPHITHEATRE
- LAGOON
- SWIMMING POOL
- CLUB
- RECREATIONAL GARDEN
- THE PAVILION
- BASKET BALL COURT
- BADMINTON COURT
- VOLLEYBALL COURT
- PARTY LAWN
- ELDER'S COURT
- FRAGRANT GARDEN
- CHILDREN'S PLAY AREA

# SITE MAP



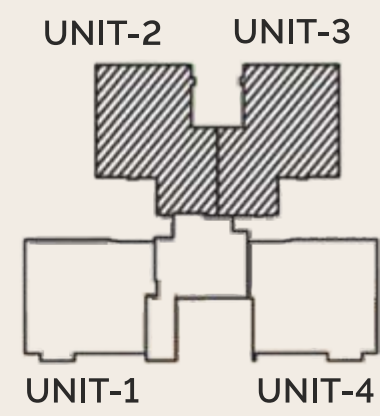
# FLOOR PLANS



**TOWER - T1 & T2**  
**3 BEDROOM + 3 TOILETS + 1 DRESSROOM**  
**CARPET AREA - 1025.00 SQ. FT.**  
**BUILT UP AREA - 1135.00 SQ.FT**  
**BALCONY AREA - 520.73 SQ.FT.**  
**SUPER AREA - 1864.00 SQ.FT.**



# FLOOR PLANS



**TOWER - T1 & T2**  
**3 BEDROOM + 3 TOILETS + 1 DRESSROOM**  
**CARPET AREA - 1008.00 SQ. FT.**  
**BUILT UP AREA - 1101.00 SQ.FT**  
**BALCONY AREA - 496.18 SQ.FT.**  
**SUPERAREA - 1833.00 SQ.FT.**



# FLOOR PLANS



**TOWER - T3 & T4**  
**3 BEDROOM + 3 TOILETS + 1 DRESSROOM +**  
**1 POWDER ROOM + SERVANT ROOM**  
**CARPET AREA - 1163.31 SQ. FT.**  
**BUILT UP AREA - 1278.00 SQ.FT**  
**BALCONY AREA - 561.31 SQ.FT.**  
**SUPER AREA - 2115.00 SQ.FT.**



# FLOOR PLANS



**TOWER - T3**  
**3 BEDROOM + 3 TOILETS + 1 DRESSROOM +**  
**1 POWDER ROOM + SERVANT ROOM**  
**CARPET AREA - 1158.00 SQ. FT.**  
**BUILT UP AREA - 1264.00 SQ.FT**  
**BALCONY AREA - 606.40 SQ.FT.**  
**SUPER AREA - 2105.00 SQ.FT.**



# FLOOR PLANS



**TOWER - T4**  
**3 BEDROOM + 3 TOILETS + 1 DRESSROOM + 1 POWDER ROOM**  
**+ SERVANT / STUDY / OFFICE WITH TOILET**  
**CARPET AREA - 1227.00 SQ. FT.**  
**BUILT UP AREA - 1338.00 SQ.FT**  
**BALCONY AREA - 582.16 SQ.FT.**  
**SUPER AREA - 2231.00 SQ.FT.**



# FLOOR PLANS



**TOWER - T5**  
**4 BEDROOM + 4 TOILET + 1 DRESSROOM +**  
**1 POWDER ROOM + SERVANT ROOM**  
**CARPET AREA - 1570.00 SQ.FT.**  
**BUILT UP AREA - 1695.00 SQ.FT**  
**BALCONY AREA - 744.00 SQ.FT.**  
**SUPER AREA - 2800.00 SQ.FT.**





# An Architecture of Grace & Flamboyance

In the grandeur of Select Premia's architecture, grace intertwines with flamboyance, creating a symphony of timeless beauty. Inspired by the elegance of Greek architecture, every column stands tall, echoing tales of ancient wisdom and divine proportions. With meticulous attention to detail, Select Premia epitomizes the harmony between classical grandeur and modern opulence, inviting admiration from all who behold its majestic presence.

Indicative Image





Artistic Impression

Discover a world  
where every detail reflects

## The Artistry of Mediterranean Living!”





Escape to a sanctuary of  
**Tranquillity &  
Indulgence**

where luxury knows no bounds  
and comfort is paramount







Interesting spaces

# Artistically Curated

to build a sync with life and living







The towers of luxury living meticulously crafted for maximum

# Comfort & Functionality





Artistic Impression

# Lavish Double Height Entrance Lobby

in each Tower





An artistic rendering of a modern, multi-story apartment building at night. The building features wide balconies with glass railings and integrated lighting. The balconies are decorated with plants and furniture, including a hanging chair and a blue lounge chair. A man and a woman are standing on one of the balconies, looking out over a city skyline at night. The sky is a deep blue with some clouds, and the city lights are visible in the background.

Experience Luxury  
Villa Life with All-Around  
**Wide Balconies**  
in an apartment!

Artistic Impression



Your Apartment is  
your Private Corner with  
**No Walls  
attached**

Step into your apartment, a personalized haven where walls dissolve, offering an open expanse for your imagination to roam free, creating a space uniquely yours, unconfined by conventional boundaries.







# Swanky Club Area

Artistic Impression





Rejuvenate and  
unwind in  
Twin Pools!





# The Odeon - Amphitheatre

Step into the grandeur of the Odeon Amphitheatre, where ancient echoes whisper tales of history, and modern performances ignite the stage, creating an unforgettable fusion of past and present.





# Artistic Greek Sculpture Courtyard

Step into a realm of artistic wonder within the sculpture courtyard, where imagination takes flight amidst intricately crafted sculptures, inviting contemplation and inspiration in a tranquil outdoor oasis.







Host cool parties  
& get together at the vibrant  
**Party Lawn**



# Under the sky, open and wide play areas

Embrace the joy of boundless play under the vast open sky in our expansive outdoor play areas, where children can frolic and explore freely, fostering a connection with nature and endless adventures.



Artistic Impression





Artistic Impression

# Relaxation, Rejuvenation, Recreation

Experience all amidst  
beautiful and expansive  
greenscapes





# Outdoor Sports Park

Provides Space for  
Recreation and Competition





Life has never  
been so  
magical before





# Up-Market Shopping Plaza

for your daily needs

On the round-about while entering the luxury residential project – SELECT PREMIA, the neighbourhood shopping complex



Convenience, Community, and Quality All in One at Neighborhood Shopping Delights



# Feel secured and relaxed!



Basement parking for residents  
Ground parking for visitors

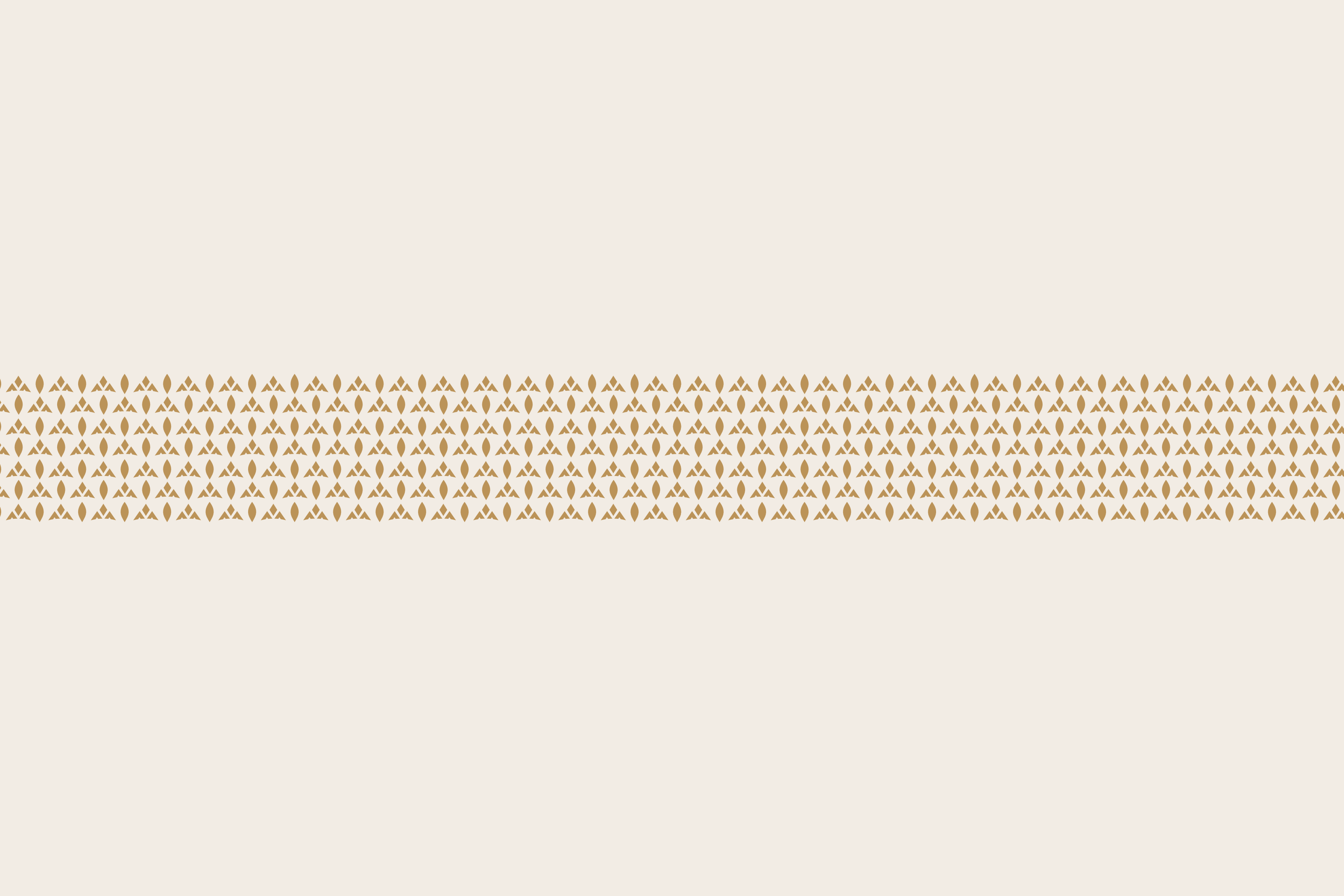


Round the clock  
Hi-tech security



24 x 7 power backup









**Faridabad Office:** 1F-22-26, Ozone Centre, Sector-12,  
Faridabad-121007 (Haryana) | Ph.: 91-129-2265143

**Gurugram Office:** First Floor, Splendor Tower-II, Sector-58  
Gurugram-122001 (Haryana) | M: 09654868686

E-mail: [info@adorerealtech.com](mailto:info@adorerealtech.com)

Website: [www.adorerealtech.com](http://www.adorerealtech.com)

Disclaimer: This does not constitute a legal offer. All areas and dimensions are tentative and subject to change till the final completion of the Project as permissible under applicable laws. This brochure contains artistic impressions and no warranty is expressly or impliedly given that the completed development of the Project will comply in any degree with such artist's impression as depicted. All layouts, plans, specifications, dimensions, designs, measurements and Locations are indicative, not to scale and are subject to change as may be decided by the Developer or the competent authority. For further details, please refer the Agreement for Sale. Soft furnishings, cupboards, furniture and gadgets, etc. are not part of the offering and are only indicative in nature and are only for the purpose of illustrating/indicating a conceived layout and do not form part of the standard specification/amenities/services to be provided.